



# Z415-BZ1-DP

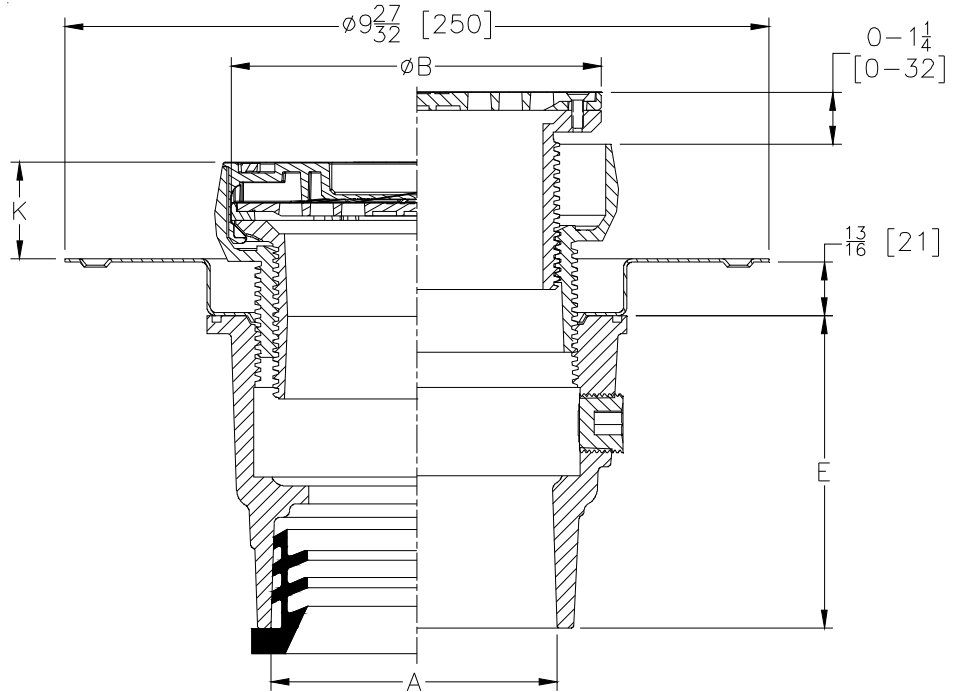
BODY ASSEMBLY W/ "TYPE B" STRAINER, DECK PLATE and EZ1™ TECHNOLOGY

SPECIFICATION SHEET

TAG \_\_\_\_\_

**PATENT  
PENDING**

Dimensional Data (inches and [ mm ]) are Subject to Manufacturing Tolerances and Change Without Notice



Dimensions In Inches				Approx. Wt. Lbs. [kg]	Strainer Open Area Sq. In [cm <sup>2</sup> ]
A Pipe Size	B Strainer Dia.	K			
		Min.	Max.		
2-3-4 [51-76-102]	5 [127]	5/8 [16]	1-21/32 [17]	16 [7]	6-1/4 [40]

### ENGINEERING SPECIFICATION:

Zurn Z415-BZ1-DP floor and shower drain, Dura-Coated cast iron body with bottom outlet, stainless steel deck plate, and top assembly. EZ1 drainage series is engineered to simplify product installation, comprised of concrete shield to provide up to 1-1/4" [32] of vertical post pour adjustment, pre-packaged shims for tilt correction, and integrated, self-contained "Type B" light duty strainer with rough-in cover for protection during concrete pour.

### OPTIONS (Check/specify appropriate options)

#### PIPE SIZE

2-3 [51-76]  
 4 [102]  
 2 [51]  
 3-4 [76-102]

#### (Specify size/type) OUTLET

\_\_\_\_\_ NH No-Hub  
 \_\_\_\_\_ NH No-Hub  
 \_\_\_\_\_ NL Neo-Loc  
 \_\_\_\_\_ NL Neo-Loc

#### 'E' BODY HT. DIM.

4-3/4 [121]  
 4-3/8 [111]  
 5-1/4 [133]  
 4-3/8 [111]

### PREFIXES

\_\_\_ ZB D.C.C.I. Body Assembly w/ Polished Bronze Top  
 \_\_\_ ZN D.C.C.I. Body Assembly w/ Polished Nickel Bronze Top\*  
 \_\_\_ ZS D.C.C.I. Body Assembly w/ Polished Stainless Steel Top

### SUFFIXES

\_\_\_ -AR Acid Resisting Epoxy Coated Cast Iron  
 \_\_\_ -CC Stainless Steel Clamp Collar  
 \_\_\_ -EF 3/4 [19] Extension Frame  
 \_\_\_ -G Galvanized Cast Iron  
 \_\_\_ -P Trap Primer Connection (1/2" [13])  
 \_\_\_ -TC Neo-Loc Test Cap Gasket (2-3-4 [51-76-102] NL Outlet Only)  
 \_\_\_ -TSP Trap Seal Protection Device (Size Matches Drain Outlet Selected, Not Available in 4") (See Z1072)  
 \_\_\_ -U 2 - 3-1/4 [51-83] High Extension Adapter  
 \_\_\_ -VP Vandal-Proof Secured Top  
 \_\_\_ -Y Sediment Bucket

\* Regularly furnished unless otherwise specified.