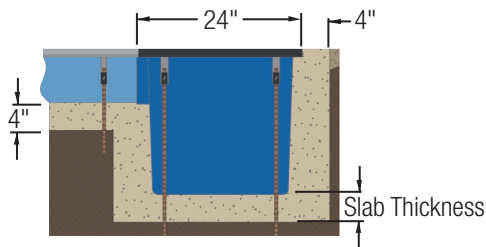


## Z817 Applications

- Highways                      Chemical Plants
- Driveways                    Food Processing
- Kitchens                      Shopping Malls
- Pools                            Industrial Plants
- Parking Lots                 Pharmaceuticals
- Gas Stations                 Port Facilities
- Airports                        Water Parks
- Airplane Hangars          Amusement Parks
- Industrial Parks

## Installation Specification



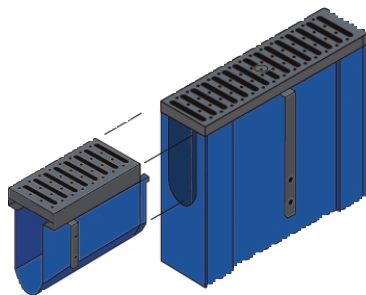
## Features and Benefits

- **6" x 20" Catch Basin** – The 6" x 20" basin is meant to be used as an in-line sump for applications where, from the top surface, the visual appearance is of continuous 6" wide Z806 trenching. Simply trace and cut the trench section to be connected into the end of the basin, insert into the basin, bolt together, and caulk around the exterior.
- **12" x 24" and 24" x 24" Catch Basins** – The larger catch basins, 12" x 24" x 24" and 24" x 24" x 24", provide greater sump capacities for larger trench runs. These catch basins can be used with Z806 and Z812. These basins have an external trench adapter supplied to make the transition between the trench and basin (see illustration). This adapter, along with the hardware, is supplied by Zurn to make a fast and easy connection to any basin. Additional adapters can be used to make numerous connections of trench into the catch basin.

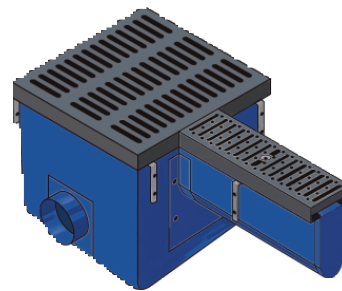
## Z817 Dimensional Data

Basin	Overall Top Dimensions				Approx. Weight (Less Grate)	
	Inches	mm	Inches	mm	Lbs.	Kg
6 x 20	6	152	20-5/8	524	11	5.0
12 x 24	23-1/4	591	12	305	36	16.3
24 x 24	23-1/4	591	24-5/8	625	50	22.7

## Z817 System Highlights



6" x 20" Catch Basin with Z806 Connecting Trench



24" x 24" Catch Basin with Z806 Connecting Trench

**Engineering Specification** Catch Basins shall be 6" wide x 20" long x 20" deep, 12" wide x 24" long x 24" deep, or 24" wide x 24" long x 24" deep and shall be made of Fiber Reinforced Polyester (FRP) fiberglass. Choice of class A, B, C, D, E, and F grates shall be available with H-20, FAA, and/or ADA compliance with mechanical lockdown devices. Outlets in 2", 3", 4", 6", and 8" diameters shall be available. Catch Basin shall be Flo-Thru model Z817.