



# Z874-U-4-HDG

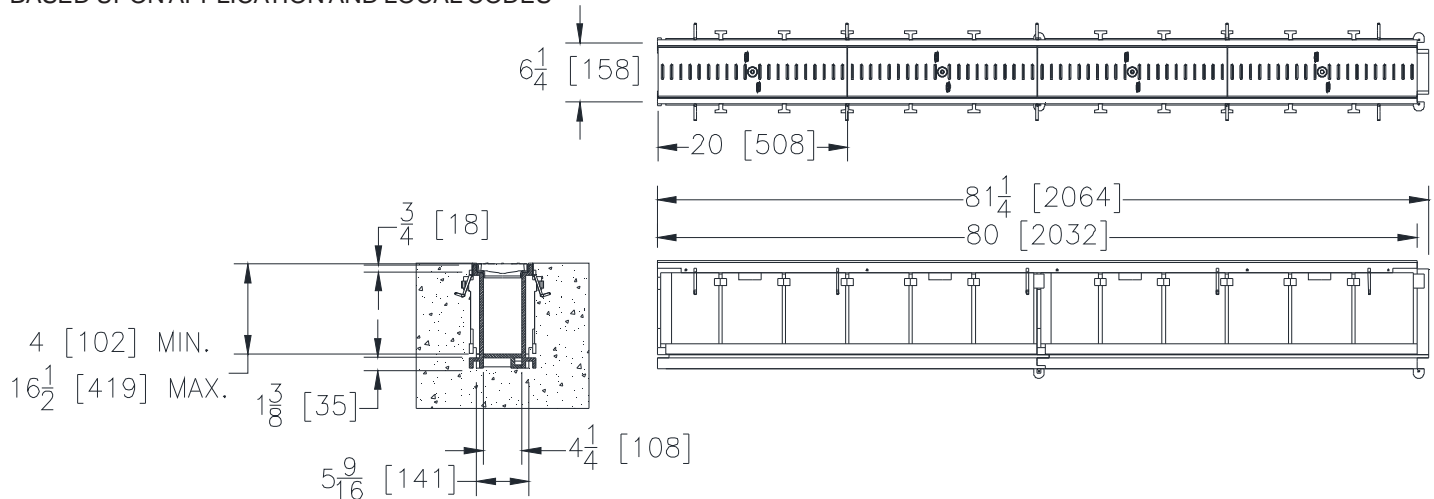
UTILITY TRENCH W/HEAVY DUTY GALVANIZED STEEL  
FRAME, 4-1/4" THROAT WIDTH, & COVER

SPECIFICATION SHEET

TAG \_\_\_\_\_

Dimensional Data (inches and [ mm ]) are Subject to Manufacturing Tolerances and Change Without Notice

SPECIFYING ENGINEER IS RESPONSIBLE FOR  
CONCRETE ENCASEMENT AND REINFORCING  
BASED UPON APPLICATION AND LOCAL CODES



**ENGINEERING SPECIFICATION:** Zurn Z874-U-4-HDG Channels shall be 80 [2032] long, 6.25 [159] wide reveal and have a 4.25 [108] wide throat. Modular channel sections shall be made of 0% water absorbent High Density Polyethylene (HDPE). Shall have a positive mechanical connection between channel sections that will not separate during the installation and shall mechanically lock into the concrete surround every 10 [254]. Channels shall weigh less than 2.31 lbs. [1.05kg] per linear foot, smooth bottom with a Manning's coefficient of 0.009 and neutral 0% built in slope. Shall be provided with standard GCE-USA Ductile Iron Solid covers that lock down to frame. Zurn 5.375 [137] wide reveal Galvanized Ductile Iron Cover conforming to ASTM specification A536-84, Grade 80-55-06. Ductile Iron Cover is rated class E per the DIN EN1433 top load classifications. Supplied in 20 [508] nominal lengths and 0.75 [19] bearing depth. The 0.105 [2.66] thick Heavy-Duty Carbon Steel Galvanized Frame Assembly conforms to ASTM specification A36 and Galvanizing conforms to ASTM specification A123 with 10 - 4 [102] long concrete anchors per 80 [2032]. Grate lockdown bars are to be integral to the frame. All welds must be performed by a certified welder per ASTM standard AWS D1.1. Frames Shall be produced in the U.S.A.

**PREFIX OPTIONS (Check/specify appropriate options)**

\_\_\_ Z Six-foot, Eight-inch High Density Polyethylene (HDPE) channel,  
Heavy Duty Galvanized Frame with anchor studs \*

**SUFFIX OPTIONS (Check/specify appropriate options)**

**Outlet Adapters Add/Each**

\_\_\_ -E1 Closed End Cap  
\_\_\_ -E2 2 [51] No-Hub End Outlet (6 [152] min.)  
\_\_\_ -E4 4 [102] No-Hub End Outlet (8 [203] min.)  
\_\_\_ -E6 6 [152] No-Hub End Outlet (10 [254] min.)  
\_\_\_ -U4 4 [102] No-Hub Bottom Outlet  
\_\_\_ -U6 6 [152] No-Hub Bottom Outlet

**Grate Options (Load Classifications are per DIN EN1433)**

\_\_\_ -DC Ductile Iron Solid Cover - Class C  
\_\_\_ -GC Galvanized Ductile Iron Solid Cover - Class C  
\_\_\_ -RGCC Reinforced Galvanized Cover - Class C

**Made in the U.S.A. (Load Classifications are per DIN EN1433)**

\_\_\_ -DCE-USA Ductile Iron Solid Cover - Class E  
\_\_\_ -GCE-USA Galvanized Ductile Iron Solid Cover - Class E \*  
\_\_\_ -GC-USA Galvanized Steel Solid Cover - Class A

**Miscellaneous Options**

\_\_\_ -DB Bottom Dome Strainer  
\_\_\_ -SSGL Stainless Steel Lockdown  
\_\_\_ -VP Vandal-Proof Lockdown

\* Regularly furnished unless otherwise specified.