



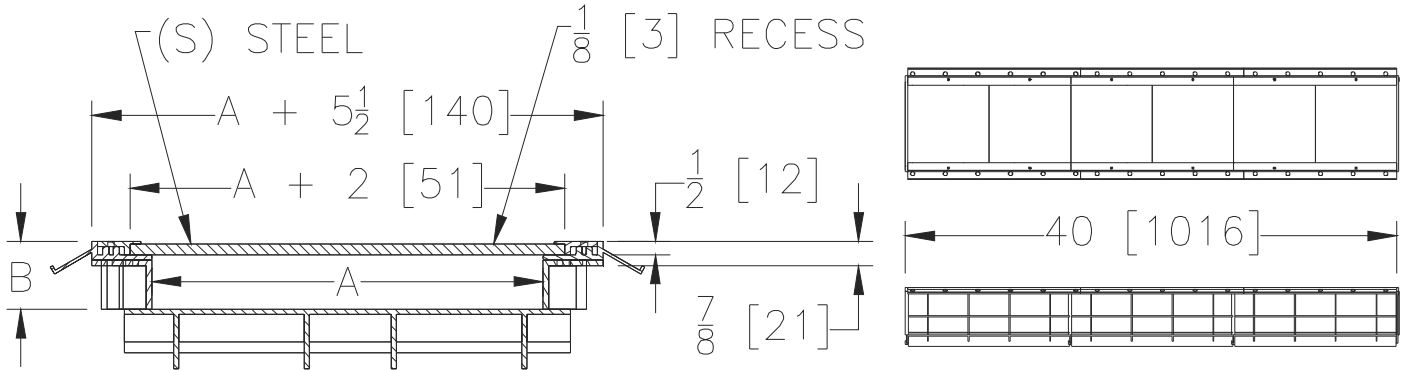
Z874-U-LDRS

LIGHT DUTY UTILITY TRENCH WITH STEEL COVER AND ALUMINUM FRAME & CLAMP

SPECIFICATION SHEET

TAG _____

Dimensional Data (inches and [mm]) are Subject to Manufacturing Tolerances and Change Without Notice



ENGINEERING SPECIFICATION: Zurn Z874-U-XX-LDRS

Channels shall be 40 [1016] long, variable reveal and variable throat width. Modular channel sections shall be made of 0% water absorbent High Density Polyethylene (HDPE). Shall have a positive mechanical connection between channel sections that will not separate during the installation and shall mechanically lock into the concrete surround every 10 [254]. Channels shall weigh less than 11.4 lbs.[5.17kg] per linear foot, smooth bottom with a Manning's coefficient of customized slope. Shall be provided with standard light-duty Solid Steel covers that lock into the frame. Steel Solid Cover is rated class A per the DIN EN1433 top load classifications and conforms to ASTM A36. Supplied in 20 [508] nominal lengths and 1/2 [13] bearing depth. The .105 [3] thick Light-Duty Aluminum Frame Assembly shall be produced in the U.S.A.

PREFIX OPTIONS (Check/specify appropriate options)

- Z Six-foot, Eight-inch High Density Polyethylene (HDPE) Channel, Light Duty Aluminum Frame, Steel Cover and Clamp*

SUFFIX OPTIONS (Check/specify appropriate options)

Outlet Adapters Add/Each

- E1 Closed End Cap
- E2 2 [51] No-Hub End Outlet
- E4 4 [102] No-Hub End Outlet
- E6 6 [152] No-Hub End Outlet
- E8 8 [203] No-Hub End Outlet
- U4 4 [102] No-Hub Bottom Outlet
- U6 6 [152] No-Hub Bottom Outlet
- U8 8 [203] No-Hub Bottom Outlet

SIZE	A THROAT	B INVERT
Z874-U-12	12 [305]	+
Z874-U-14	14 [356]	+
Z874-U-16	16 [406]	+
Z874-U-18	18 [457]	+
Z874-U-20	20 [508]	+
Z874-U-21	21 [533]	+
Z874-U-22	22 [559]	+
Z874-U-24	24 [610]	+
Z874-U-26	26 [660]	+
Z874-U-28	28 [711]	+

+ AS SPECIFIED FROM 4 [102] TO 30 [762] DEPTH

*REGULARLY FURNISHED UNLESS OTHERWISE SPECIFIED

REV. B	DATE: 04/18/13	C.N.NO. 129161
PROD./DWG NO Z874-U-LDRS		