



Z883

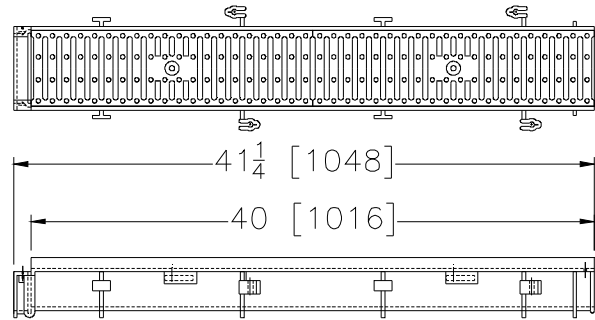
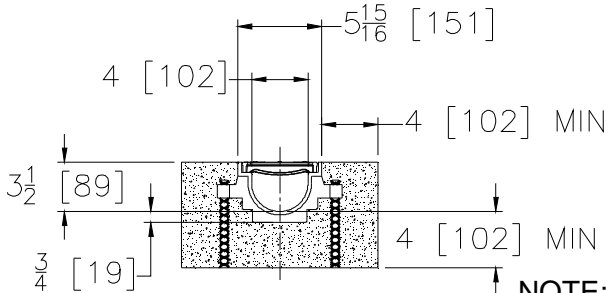
6 [152] WIDE REVEAL TRENCH DRAIN SYSTEM

SPECIFICATION SHEET

TAG _____

Dimensional Data (inches and [mm]) are Subject to Manufacturing Tolerances and Change Without Notice

SPECIFYING ENGINEER IS RESPONSIBLE FOR CONCRETE ENCASEMENT AND REINFORCING BASED UPON APPLICATION AND LOCAL CODES



NOTE: + Actual Channel length is 41 1/4 [1048] to allow for overlap.

ENGINEERING SPECIFICATION: Zurn Z883

Channels shall be 40" [1016mm] long, 6" [152mm] wide reveal and have a 4" [102mm] throat. Modular channel sections shall be made of 0% water absorbent Polyethylene. Shall have a positive mechanical connection between channel sections that will not separate during the installation and shall mechanically lock into the concrete surround a minimum of every 10" [254mm]. Channels shall weigh less than 2.31 lbs. [1.05kg] per linear foot, have a smooth, 2" [51mm] radiused self cleaning bottom with a Manning's coefficient of .009 and neutral 0% built in slope. Channels shall have rebar clips standard to secure trench in its final location. Shall be provided with standard DGC grates that lock down with lockdown bars to the channel and is not intended for dynamic traffic loadings. Zurn 5.375" [137mm] wide reveal Ductile Iron Slotted Grate conforming to ASTM specification A536-84, Grade 80-55-06. Ductile Iron grate is rated class C per the DIN EN1433 top load classifications. Supplied in 20" [508mm] nominal lengths

PREFIX OPTIONS (Check/specify appropriate options)

___ Z Three-foot, Four-inch High Density Polyethylene (HDPE)*

SUFFIX OPTIONS (Check/specify appropriate options)

Outlet Adapters Add/Each

___ -E1 Closed End Cap ___ -U2 2 [51] No-Hub Bottom Outlet ___ -U4 4 [102] No-Hub Bottom Outlet
___ -E2 2 [51] No-Hub End Outlet ___ -U3 3 [76] No-Hub Bottom Outlet

Grate Options (Load Classifications are per DIN EN1433)

- ___ -BDC Black Acid Resistant Epoxy Coated Ductile Grate - Class C
___ -BG Galvanized Ductile Iron Bar Grate - Class C+
___ -DBG Ductile Iron Cast Bar Grate - Class C+
___ -DC Ductile Iron Solid Cover - Class C+
___ -DGC Ductile Iron Slotted Grate - Class C *+
___ -GDC Galvanized Ductile Slotted Grate - Class C+
___ -GG Fiberglass Grate - Class A
___ -GHPD Galvanized Heel-Proof Ductile Grate - Class B
___ -HPD Heel-Proof Ductile Slotted Grate - Class B
___ -HPP Heel-Proof Polyethylene Grate - Class A
___ -RFGC Reinforced Galvanized Steel Slotted Grate - Class C+
___ -RFSC Reinforced Stainless Steel Slotted Grate - Class C+
___ -RPGC Reinforced Galvanized Perforated Grate - Class C+
___ -RPSC Reinforced Stainless Steel Perforated Grate - Class C+

Decorative Grate Options (Load Classifications are per DIN EN1433)

- ___ -BCD Bronze Circular Decorative Grate - Class A
___ -BDD Bronze Diagonal Decorative Grate - Class A
___ -DCD Ductile Iron Circular Decorative Grate - Class C+
___ -DDD Ductile Iron Diagonal Decorative Grate - Class A
___ -DOG Ductile Iron Decorative Grate - Class A
___ -DWV Ductile Wave Decorative Grate - Class A
___ -GMG Galvanized Steel Mesh Grate - Class A
___ -HPB Heel-Proof Bronze Slotted Grate - Class A
___ -HPS Heel-Proof Stainless Steel Slotted Grate - Class A
___ -SBG Stainless Steel Bar Grate - Class E+
___ -SCD Stainless Steel Circular Decorative Grate - Class B
___ -SDD Stainless Steel Diagonal Decorative Grate - Class B
___ -SMG Stainless Steel Steel Mesh Grate - Class A
___ -SOG Stainless Steel Decorative Grate - Class B

Miscellaneous Options

___ -VP Vandal-Proof Lockdown ___ -SVF Stainless Steel Veneer Frame ___ -DB Bottom Dome Strainer

MADE in the U.S.A. (Load Classifications are per DIN EN1433)

- ___ -AWG Aluminum Wire Grate - Class A
___ -DGC-USA Ductile Iron Slotted Grate - Class C+
___ -FG Fabricated Galvanized Steel Slotted Grate - Class A
___ -FS Fabricated Stainless Steel Slotted Grate - Class A
___ -GDC-USA Galvanized Ductile Slotted Grate - Class C+
___ -GG Fiberglass Grate - Class A
___ -PG Perforated Galvanized Steel Grate - Class A
___ -PPC Plastic Perforated Grate - Class C+
___ -PS Perforated Stainless Steel Grate - Class A

Decorative MADE in the U.S.A. (Load Classifications are per DIN EN1433)

- ___ -BZ Bronze Decorative Grate - Class A
___ -NBZ-USA Nickel Bronze Decorative Grate - Class A
___ -PSR Perforated Stainless Steel Raised Grate - Class A
___ -SWG Stainless Steel Wire Grate - Class A

* Regularly furnished unless otherwise specified.

+ Class C non dynamic.