



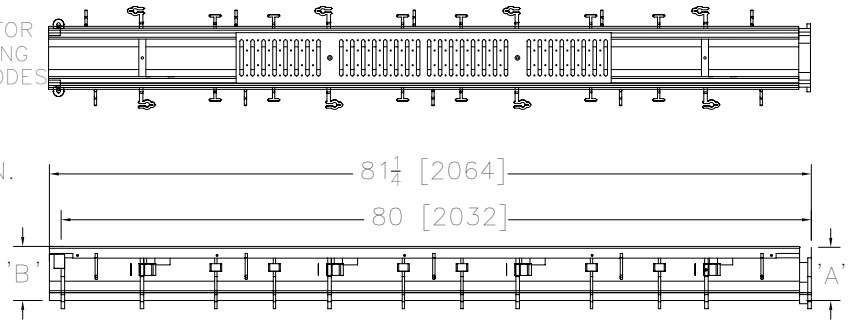
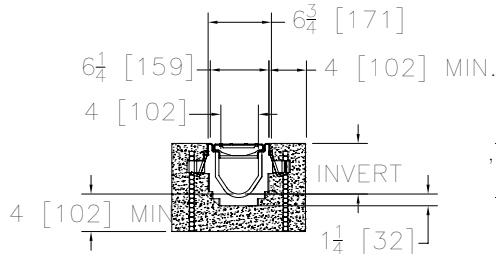
Z886-HD-LD

6-3/4 [171] WIDE REVEAL TRENCH DRAIN SYSTEM W/ HEAVY-DUTY FRAME ASSEMBLY W/ LIGHT-DUTY GRATES

SPECIFICATION SHEET

TAG _____

Design and Dimensional Data (inches and [mm]) are Subject to Manufacturing Tolerances and Change Without Notice

SPECIFYING ENGINEER IS RESPONSIBLE FOR
CONCRETE ENCASEMENT AND REINFORCING
BASED UPON APPLICATION AND LOCAL CODES

NOTE: + Actual Channel length is 81 1/4 [2064] to allow for overlap.

ENGINEERING SPECIFICATION: Zurn Z886-HD-LD

Channels shall be 80 [2032] long, 6-3/4 [171] wide reveal and have a 4 [102] throat. Modular channel sections shall be made of 0% water absorbent High Density Polyethylene (HDPE). Shall have a positive mechanical connection between channel sections that will not separate during the installation and shall mechanically lock into the concrete surround every 10 [254]. Channels shall weigh less than 2.31 lbs.[1.05kg] per linear foot, have a smooth, 1-1/2 [38] radiused self cleaning bottom with a Manning's coefficient of .009 and .75% or neutral 0% built in slope. Channels shall have rebar clips standard to secure trench in its final location. Shall be provided with standard FG grates that lock down to frame. Fabricated Steel grate is rated class A per the DIN EN1433 top load classifications. Supplied in 40 [1016] nominal lengths with 3/8 [10] wide slots, and 3/4 [19] bearing depth. Grate has an open area of 12.00 sq. in per ft. [25,400 sq. mm per meter]. The .105 [2.66] thick Heavy-Duty Carbon Steel Frame Assembly conforms to ASTM specification A36 with 10 - 4 [102] long concrete anchors per 80 [2032]. Grate lockdown bars are to be integral to the frame The frame is supplied with a powder coated finish. All welds must be performed by a certified welder per ASTM standard AWS D1.1. Frames Shall be produced in the U.S.A. The System loading is based upon the grate being used.

PREFIX OPTIONS (Check/specify appropriate options)

___ Z Six-foot, Eight-inch High Density Polyethylene (HDPE)*

SUFFIX OPTIONS (Check/specify appropriate options)

Outlet Adapters Add/Each

___-E1 Closed End Cap ___-U2 2 [51] No-Hub Bottom Outlet
___-E2 2 [51] No-Hub End Outlet ___-U3 3 [76] No-Hub Bottom Outlet
___-E3 3 [76] No-Hub End Outlet ___-U4 4 [102] No-Hub Bottom Outlet
___-E4 4 [102] No Hub End Outlet ___-U6 6 [152] No-Hub Bottom Outlet
___-E6 6 [152] No-Hub End Outlet

Frame Options

___-CBF Black Acid Resistant Coated Top Frame
___-HDF-USA Extra-Heavy-Duty Frame Assembly with Anchor Studs and Grate Lockdown Hardware

Grate Options (Load Classifications are per DIN EN1433)

___-GHPD Galvanized Heel-Proof Ductile ADA Grate - Class B
___-HPD Heel-Proof Longitudinal Ductile ADA Grate - Class B
___-HPP Heel-Proof Polyethylene Grate - Class A

Decorative Grate Options (Load Classifications are per DIN EN1433)

___-BCD Bronze Circular Decorative Grate - Class A
___-BDD Bronze Diagonal Decorative Grate - Class A
___-DCD Ductile Iron Circular Decorative Grate - Class C
___-DDD Ductile Iron Diagonal Decorative Grate - Class A
___-DOG Ductile Iron Decorative Grate - Class A
___-DMV Ductile Wave Decorative Grate - Class A
___-GWG Galvanized Steel Mesh Grate - Class A
___-HPB Heel-Proof Bronze Slotted Grate - Class A
___-HPS Heel-Proof Stainless Steel Slotted Grate - Class A
___-SCD Stainless Steel Circular Decorative Grate - Class B
___-SDD Stainless Steel Diagonal Decorative Grate - Class B
___-SMG Stainless Steel Steel Mesh Grate - Class A
___-SOG Stainless Steel Decorative Grate - Class B

Miscellaneous Options

___-VP Vandal-Proof Lockdown
___-JC Joint Connector
___-DB Bottom Dome Strainer

* Regularly furnished unless otherwise specified

⚠ **WARNING:** Cancer and Reproductive Harm - www.P65Warnings.ca.gov⚠ **ADVERTENCIA:** Cáncer y daño reproductivo - www.P65Warnings.ca.gov⚠ **AVERTISSEMENT:** Cancer et effets néfastes sur la reproduction - www.P65Warnings.ca.gov

Zurn Industries, LLC | Specification Drainage Operation
1801 Pittsburgh Avenue, Erie, PA 16502, Ph. 855.663.9876

In Canada | Zurn Industries Limited
7900 Goreway Drive, Unit 10, Brampton, Ontario L6T 5W6, Ph. 877.892.5216

www.zurn.com

Trench No.	'A' Shallow Inv.	'B' Deep Inv.	Flow		
			(cfs)	(gpm)	(lps)
8601	3.50 [89]	4.10 [104]	0.21	93	6
8602	4.10 [104]	4.70 [119]	0.27	122	8
8603	4.70 [119]	5.30 [135]	0.34	152	10
8603N	5.30 [135]	5.30 [135]	-	-	-
8604	5.30 [135]	5.90 [150]	0.41	183	12
8605	5.90 [150]	6.50 [165]	0.48	214	13
8606	6.50 [165]	7.10 [180]	0.55	245	15
8606N	7.10 [180]	7.10 [180]	-	-	-
8607	7.10 [180]	7.70 [196]	0.62	276	17
8608	7.70 [196]	8.30 [211]	0.69	308	19
8609	8.30 [211]	8.90 [226]	0.76	339	21
8610	8.90 [226]	9.50 [241]	0.83	371	23
8611	9.50 [241]	10.10 [257]	0.90	403	25
8612	10.10 [257]	10.70 [272]	0.97	435	27
8612N	10.70 [272]	10.70 [272]	-	-	-
8613	10.70 [272]	11.30 [287]	1.04	467	29
8614	11.30 [287]	11.90 [302]	1.11	498	31
8615	11.90 [302]	12.50 [318]	1.18	530	33

MADE in the U.S.A. (Load Classifications are per DIN EN 1433)

___-AWG Aluminum Wire Grate - Class A
___-FG* Fabricated Galvanized Steel Slotted Grate - Class A
___-FS Fabricated Stainless Steel Slotted Grate - Class A
___-GG Fiberglass Grate - Class A
___-PG Perforated Galvanized Steel Grate - Class A
___-PGR Galvanized Perforated Reverse Punch Anti-Slip ADA Grate - Class A
___-PS Perforated Stainless Steel Grate - Class A

Decorative MADE in the U.S.A. (Load Classifications are per DIN EN 1433)

___-BZ Bronze Decorative Grate - Class A
___-NBZ-USA Nickel Bronze Decorative Grate - Class A
___-PSR Perforated Stainless Steel Raised Grate - Class A
___-SWBG-AS Slip Resistant Stainless Steel Wire Grate- Class B
___-SWG-B Stainless Steel Wire Grate- Class B

Rev. F
Date: 03/20/24
C.N. No. 145919
Prod. | Dwg. No. Z886-HD-LD