



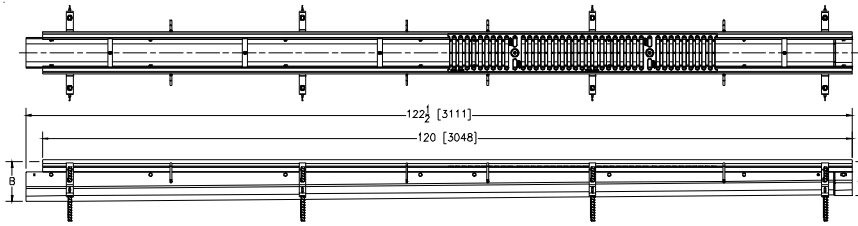
# ZF806

## 6 [159] WIDE REVEAL FIBER REINFORCED POLYMER TRENCH DRAIN SYSTEM

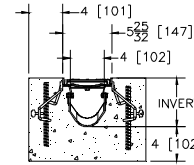
### SPECIFICATION SHEET

TAG \_\_\_\_\_

Dimensional Data (inches and [ mm ]) are Subject to Manufacturing Tolerances and Change Without Notice



NOTE: +Actual Channel length is 122 [3112] to allow overlap.



#### ENGINEERING SPECIFICATION: Zurn ZF806

Channels shall be 120 [3048] long, 6 [152] wide and have a 4 [102] throat. Modular channel section shall be made of Fiber Reinforced Polymer (FRP). Shall have a positive mechanical connection between channel sections that will not separate during the installation. Channels shall weigh less than 2.31 lbs. [1.05kg] per linear foot, have a smooth, 1-1/2 [38] radiused self cleaning bottom with a Manning's coefficient of .009 and .75% or neutral 0% built in slope. Shall be provided with standard DGC grates that lock down to frame. Zurn 6 [152] wide reveal Ductile Iron Slotted Grate conforming to ASTM specification A536, Grade 80-55-06. Ductile Iron grate is rated class C per the DIN EN1433 top load classifications. Supplied in 20 [508] nominal lengths with 1/2 [13] wide slots, and 3/4 [19] bearing depth. Grate has an open area of 28.1 sq. in per ft. [59,463 sq. mm per meter]. The #10 gage thick Heavy-Duty Carbon Steel Frame Assembly conforms to ASTM specification A36. Frames shall mechanically lock into the concrete surround at a maximum spacing of every 20 [508] with 16 concrete anchors per 120 [3048]. Frames shall have rebar attachment brackets as standard to secure trench in its final location. Grate lockdown bars are to be integral to the frame. The frame is supplied with a powder coated finish. All welds must be performed by a certified welder per ASTM standard AWS D1.1. Frames and Channels shall be produced in the U.S.A.

#### PREFIX OPTIONS (Check/specify appropriate options)

\_\_\_ ZF Ten-foot Fiber Reinforced Polymer (FRP)\*

#### SUFFIX OPTIONS (Check/specify appropriate options)

##### Outlet Adapters Add/Each

- \_\_\_ E1 Closed End Cap
- \_\_\_ E2 2 [51] No-Hub End Outlet
- \_\_\_ E3 3 [76] No-Hub End Outlet
- \_\_\_ E4 4 [102] No-Hub End Outlet
- \_\_\_ E6 6 [152] No-Hub End Outlet
- \_\_\_ U2 2 [51] No-Hub Bottom Outlet
- \_\_\_ U3 3 [76] No-Hub Bottom Outlet
- \_\_\_ U4 4 [102] No-Hub Bottom Outlet
- \_\_\_ U6 6 [152] No-Hub Bottom Outlet

##### Grate Options (Load Classifications are per DIN EN1433)

- \_\_\_ -BDC Black Acid Resistant Epoxy Coated Ductile Grate - Class C
- \_\_\_ -BDE Black Acid Resistant Epoxy Coated Ductile Grate - Class E
- \_\_\_ -BG Galvanized Ductile Iron Cast Bar Grate - Class C
- \_\_\_ -DC Ductile Iron Solid Cover - Class C
- \_\_\_ -DBG Ductile Iron Cast Bar Grate - Class C
- \_\_\_ -DGC Ductile Iron Slotted Grate - Class C \*
- \_\_\_ -DGE Ductile Iron Slotted Grate - Class E
- \_\_\_ -GDC Galvanized Ductile Slotted Grate - Class C
- \_\_\_ -GDE Galvanized Ductile Slotted Grate - Class E
- \_\_\_ -GHPD Galvanized Heel-Proof Ductile Grate - Class B
- \_\_\_ -GHPDE Galvanized Heel-Proof Ductile Grate - Class E
- \_\_\_ -GG Fiberglass Grate - Class A
- \_\_\_ -HPD Heel-Proof Ductile Slotted Grate - Class B
- \_\_\_ -HPDE Heel-Proof Ductile Slotted Grate - Class E
- \_\_\_ -HPP Heel-Proof Polyethylene Grate - Class A
- \_\_\_ -LD Ductile Iron Longitudinal Slotted Grate - Class B
- \_\_\_ -RFGC Reinforced Slotted Galvanized Grate - Class C
- \_\_\_ -RFSC Reinforced Slotted Stainless Steel Grate - Class C
- \_\_\_ -RPGC Reinforced Perforated Galvanized Grate - Class C
- \_\_\_ -RPGR Reinforced Galvanized Perforated Reverse Punch Anti-Slip Grate - Class B
- \_\_\_ -RPGRC Reinforced Perforated Galvanized Reverse Punch Grate - Class C
- \_\_\_ -RPSC Reinforced Perforated Stainless Steel Grate - Class C
- \_\_\_ -RPSRC Reinforced Perforated Stainless Steel Reverse Punch Grate - Class C

##### Miscellaneous Options

- \_\_\_ -DB Bottom Dome Strainer
- \_\_\_ -JC Joint Connector
- \_\_\_ -VP Vandal-Proof Lockdown

Trench No.	'A' Shallow Inv.	'B' Deep Inv.	Flow		
			(cfs)	(gpm)	(lps)
1002	4.75 [121]	5.65 [144]	.326	146	9
1002N	5.65 [144]	5.65 [144]	-	-	-
1003	5.65 [144]	6.55 [166]	.427	192	12
1004	6.55 [166]	7.45 [189]	.530	238	15
1004N	7.45 [189]	7.45 [189]	-	-	-
1005	7.45 [189]	8.35 [212]	.635	285	18
1006	8.35 [212]	9.25 [235]	.740	332	21
1007	9.25 [235]	10.15 [258]	.845	379	24
1008	10.15 [258]	11.05 [281]	.951	427	27
1008N	11.05 [281]	11.05 [281]	-	-	-
1009	11.05 [281]	11.95 [304]	1.058	475	30
1010	11.95 [304]	12.85 [326]	1.164	523	33

#### Note:

The maximum fluid temperature through the system must not exceed 150°F [66°C] and the range (Max. Temp. to Min. Temp.) must not exceed 100°F [38°C].

#### Decorative Grate Options (Load Classifications are per DIN EN1433)

- \_\_\_ -BCD Bronze Circular Decorative Grate - Class A
- \_\_\_ -BDD Bronze Diagonal Decorative Grate - Class A
- \_\_\_ -DCD Ductile Iron Circular Decorative Grate - Class C
- \_\_\_ -DDD Ductile Iron Diagonal Decorative Grate - Class A
- \_\_\_ -DOG Ductile Iron Decorative Grate - Class A
- \_\_\_ -DWV Ductile Wave Decorative Grate - Class A
- \_\_\_ -DTW Ductile Iron Tidal Wave Grate - Class C
- \_\_\_ -HPB Heel-Proof Bronze Slotted Grate - Class A
- \_\_\_ -HPS Heel-Proof Stainless Steel Slotted Grate - Class A
- \_\_\_ -SBG Stainless Steel Bar Grate - Class E
- \_\_\_ -SCD Stainless Steel Circular Decorative Grate - Class B
- \_\_\_ -SDD Stainless Steel Diagonal Decorative Grate - Class B
- \_\_\_ -SMG Stainless Steel Mesh Grate - Class B
- \_\_\_ -SOG Stainless Steel Decorative Grate - Class B

#### MADE in the U.S.A. (Load Classifications are per DIN EN1433)

- \_\_\_ -AWG Aluminum Wire Grate - Class A
- \_\_\_ -BDE-USA Black Acid Resistant Epoxy Coated Ductile Grate - Class E
- \_\_\_ -DCE-USA Ductile Solid Cover - Class E
- \_\_\_ -DGC-USA Ductile Iron Slotted Grate - Class C
- \_\_\_ -DGE-USA Ductile Iron Slotted Grate - Class E
- \_\_\_ -FG Fabricated Galvanized Steel Slotted Grate - Class A
- \_\_\_ -FS Fabricated Stainless Steel Slotted Grate - Class A
- \_\_\_ -GDC-USA Galvanized Ductile Slotted Grate - Class C
- \_\_\_ -GDE-USA Galvanized Ductile Slotted Grate - Class E
- \_\_\_ -GHPDE-USA Galvanized Heel-Proof Ductile Grate - Class E
- \_\_\_ -GMG Galvanized Steel Mesh Grate - Class B
- \_\_\_ -HPDE-USA Heel-Proof Ductile Slotted Grate - Class E
- \_\_\_ -PG Perforated Galvanized Steel Grate - Class A
- \_\_\_ -PGR Galvanized Perforated Reverse Punch Anti-Slip ADA Grate - Class A
- \_\_\_ -PS Perforated Stainless Steel Grate - Class A
- \_\_\_ -PPC Plastic Perforated Grate - Class C

#### Decorative MADE in the U.S.A. (Load Classifications are per DIN EN1433)

- \_\_\_ -BZ Bronze Decorative Grate - Class A
- \_\_\_ -NBZ Nickel Bronze Decorative Grate - Class A
- \_\_\_ -PDE-USA Ductile Iron Perforated ADA Grate - Class E
- \_\_\_ -PSR Perforated Stainless Steel Raised Grate - Class A
- \_\_\_ -SWG Stainless Steel Wire Grate - Class A

\* Regularly furnished unless otherwise specified.

#### Zurn Industries, LLC | Specification Drainage Operation

1801 Pittsburgh Avenue, Erie, PA U.S.A. 16502 · Ph. 855-663-9876, Fax 814-454-7929

#### In Canada | Zurn Industries Limited

3544 Nashua Drive, Mississauga, Ontario L4V 1L2 · Ph. 905-405-8272, Fax 905-405-1292

www.zurn.com

Rev. F

Date: 07/23/14

C.N. No. 131256

Prod. | Dwg. No. ZF806