



ZFV806

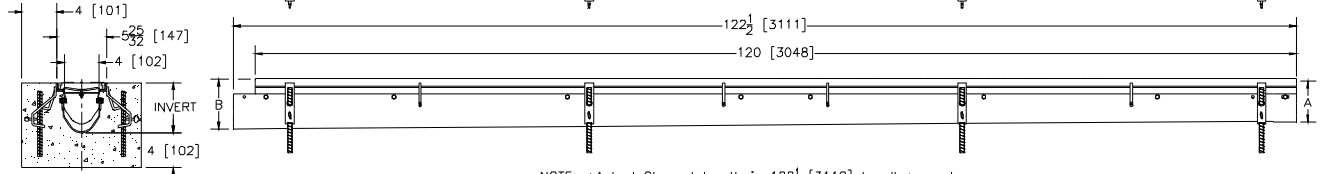
6 [159] WIDE REVEAL FIBER REINFORCED VINYLESTER TRENCH DRAIN SYSTEM

SPECIFICATION SHEET

TAG _____

Dimensional Data (inches and [mm]) are Subject to Manufacturing Tolerances and Change Without Notice

SPECIFYING ENGINEER IS RESPONSIBLE FOR CONCRETE ENCASEMENT AND REINFORCING BASED UPON APPLICATION AND LOCAL CODES.



NOTE: +Actual Channel length is 122 1/2 [3112] to allow overlap.

ENGINEERING SPECIFICATION: Zurn ZFV806

Channels shall be 120 [3048] long, 6 [152] wide and have a 4 [102] throat. Modular channel sections shall be made of Fiber Reinforced Vinylester. Shall have a positive mechanical connection between channel sections that will not separate during the installation. Channels shall weigh less than 2.31 lbs.[1.05 kg] per linear foot, have a smooth, 1-1/2 [38] radiused self cleaning bottom with a Manning's coefficient of .009 and .75% or neutral 0% built in slope. Shall be provided with standard DGC grates that lock down to frame. Zurn 6 [152] wide reveal Ductile Iron Slotted Grate conforming to ASTM specification A536, Grade 80-55-06. Ductile Iron grate is rated class C per the DIN EN1433 top load classifications. Supplied in 20 [508] nominal lengths with 1/2 [13] wide slots, and 3/4 [19] bearing depth. Grate has an open area of 28.6 sq. in. per ft. [60,521 sq. mm per meter]. The #10 gage thick Heavy-Duty Carbon Steel Frame Assembly conforms to ASTM specification A36. Frames shall mechanically lock into the concrete surround at a maximum spacing of every 20 [508] with 16 concrete anchors per 120 [3048]. Frames shall have rebar attachment brackets as standard to secure trench in its final location. Grate lockdown bars are to be integral to the frame. The frame is supplied with a powder coated finish. All welds must be performed by a certified welder per ASTM standard AWS D1.1. Channels have a 94-5VA Flammability Rating per ASTM D5048 and a V-O flammability rating per ASTM D3801. Frames and Channels shall be produced in the U.S.A.

PREFIX OPTIONS (Check/specify appropriate options)

___ ZFV Ten-foot Fiber Reinforced Vinylester*

SUFFIX OPTIONS (Check/specify appropriate options)

Outlet Adapters Add/Each

___ E1	Closed End Cap	___ U2	2 [51] No-Hub Bottom Outlet
___ E2	2 [51] No-Hub End Outlet	___ U3	3 [76] No-Hub Bottom Outlet
___ E3	3 [76] No-Hub End Outlet	___ U4	4 [102] No-Hub Bottom Outlet
___ E4	4 [102] No-Hub End Outlet	___ U6	6 [152] No-Hub Bottom Outlet
___ E6	6 [152] No-Hub End Outlet		

Grate Options (Load Classifications are per DIN EN1433)

___ BDC	Black Acid Resistant Epoxy Coated Ductile Grate - Class C
___ BDE	Black Acid Resistant Epoxy Coated Ductile Grate - Class E
___ BG	Galvanized Ductile Iron Cast Bar Grate - Class C
___ DC	Ductile Iron Solid Cover - Class C
___ DBG	Ductile Iron Cast Bar Grate - Class C
___ DGC	Ductile Iron Slotted Grate - Class C *
___ DGE	Ductile Iron Slotted Grate - Class E
___ DGE-NA	Ductile Iron Slotted Grate - Class E -North American
___ GDC	Galvanized Ductile Slotted Grate - Class C
___ GDE	Galvanized Ductile Slotted Grate - Class E
___ GG	Fiberglass Grate - Class A
___ GHPD	Galvanized Heel-Proof Ductile Grate - Class B
___ GHPDE	Galvanized Heel-Proof Ductile Grate - Class E
___ HPD	Heel-Proof Ductile Slotted Grate - Class B
___ HPDE	Heel-Proof Ductile Slotted Grate - Class E
___ HPP	Heel-Proof Polyethylene Grate - Class A
___ LD	Ductile Iron Longitudinal Slotted Grate - Class B
___ RFG	Reinforced Galvanized Steel Slotted Grate - Class B
___ RFGC	Reinforced Galvanized Steel Slotted Grate - Class C.
___ RFSC	Reinforced Stainless Steel Slotted Grate - Class C.
___ RPG	Reinforced Galvanized Perforated Grate - Class B
___ RPGC	Reinforced Galvanized Perforated Grate - Class C.
___ RPSC	Reinforced Perforated Stainless Steel Grate - Class C
___ RPGR	Reinforced Galvanized Perforated Reverse Punch Anti-Slip Grate - Class B
___ RPGR	Reinforced Galvanized Perforated Reverse Punch Anti-Slip Grate - Class C.
___ RPSRC	Reinforced Perforated Stainless Steel Reversed Punch Grate - Class C

Miscellaneous Options

___ DB	Bottom Dome Strainer
___ JC	Joint Connector
___ VP	Vandal-Proof Lockdown
___ CBF	Black Acid Resistant Coated Top Frame
___ HDG	Galvanized Extra-Heavy-Duty Frame Assembly With Anchor Studs and Grate Lockdown Hardware
___ SF	Type 304 Stainless Steel Top Frame Assembly

Decorative Grate Options (Load Classifications are per DIN EN1433)

___ BCD	Bronze Circular Decorative Grate - Class A
___ BDD	Bronze Diagonal Decorative Grate - Class A
___ DCD	Ductile Iron Circular Decorative Grate - Class C
___ DDD	Ductile Iron Diagonal Decorative Grate - Class A
___ DOG	Ductile Iron Decorative Grate - Class A
___ DTW	Ductile Iron Tidal Wave Grate - Class C
___ DWV	Ductile Wave Decorative Grate - Class A
___ HPB	Heel-Proof Bronze Slotted Grate - Class A
___ HPS	Heel-Proof Stainless Steel Slotted Grate - Class A

* Regularly furnished unless otherwise specified.

	'A' Shallow Inv.	'B' Deep Inv.			
			(cfs)	(gpm)	(lps)
1002	4.75 [121]	5.65 [144]	.326	146	9
1002N	5.65 [144]	5.65 [144]	-	-	-
1003	5.65 [144]	6.55 [166]	.427	192	12
1004	6.55 [166]	7.45 [189]	.530	238	15
1004N	7.45 [189]	7.45 [189]	-	-	-
1005	7.45 [189]	8.35 [212]	.635	285	18
1006	8.35 [212]	9.25 [235]	.740	332	21
1007	9.25 [235]	10.15 [258]	.845	379	24
1008	10.15 [258]	11.05 [281]	.951	427	27
1008N	11.05 [281]	11.05 [281]	-	-	-
1009	11.05 [281]	11.95 [304]	1.058	475	30
1010	11.95 [304]	12.85 [326]	1.164	523	33

Note:

The maximum fluid temperature through the system must not exceed 212°F [100°C] and the range (Max. Temp. to Min. Temp.) must not exceed 100°F [38°C].

Decorative Grate Options Cont. (Load Classifications are per DIN EN1433)

___ SBG	Stainless Steel Bar Grate - Class E
___ SCD	Stainless Steel Circular Decorative Grate - Class B
___ SDD	Stainless Steel Diagonal Decorative Grate - Class B
___ SMG	Stainless Steel Mesh Grate - Class B
___ SOG	Stainless Steel Decorative Grate - Class B

MADE in the U.S.A. (Load Classifications are per DIN EN1433)

___ AWG	Aluminum Wire Grate - Class A
___ BDE-USA	Black Acid Resistant Epoxy Coated Ductile Grate - Class E
___ DCE-USA	Ductile Solid Cover - Class E
___ DGC-USA	Ductile Iron Slotted Grate - Class C
___ DGE-USA	Ductile Iron Slotted Grate - Class E
___ FG	Fabricated Galvanized Steel Slotted Grate - Class A
___ FS	Fabricated Stainless Steel Slotted Grate - Class A
___ GDC-USA	Galvanized Ductile Slotted Grate - Class C
___ GDE-USA	Galvanized Ductile Slotted Grate - Class E
___ GMG	Galvanized Steel Mesh Grate - Class B
___ GHPDE-USA	Galvanized Heel-Proof Ductile Grate - Class E
___ HPDE-USA	Heel-Proof Ductile Slotted Grate - Class E
___ PG	Perforated Galvanized Steel Grate - Class A
___ PGR	Galvanized Perforated Reverse Punch Anti-Slip Grate Class A
___ PPC	Plastic Perforated Grate -Class C
___ PS	Perforated Stainless Steel Grate - Class A
___ PSR	Stainless Steel Perforated Reverse Punch Anti-Slip Grate Class A

Decorative MADE in the U.S.A. (Load Classifications are per DIN EN1433)

___ BZ	Bronze Decorative Grate - Class A
___ NBZ-USA	Nickel Bronze Decorative Grate - Class A
___ PDE-USA	Ductile Iron Perforated ADA Grate - Class E
___ PSR	Perforated Stainless Steel Raised Grate - Class A
___ SWG	Stainless Steel Wire Grate - Class A

Zurn Industries, LLC | Specification Drainage Operation
1801 Pittsburgh Avenue, Erie, PA U.S.A. 16502 · Ph. 855-663-9876, Fax 814-454-7929

In Canada | Zurn Industries Limited
3544 Nashua Drive, Mississauga, Ontario L4V 1L2 · Ph. 905-405-8272, Fax 905-405-1292

www.zurn.com

Rev. H
Date: 07/23/14
C.N. No. 131261
Prod. | Dwg. No. ZFV806